

E-LINE™

Now Available with Total Lock!



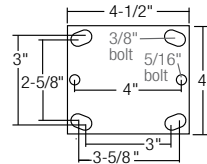
FEATURES

- Total Lock locks and unlocks both wheel and swivel with a toe tap
- Total Lock permanently integrated into swivel fork
- Double ball raceways for smooth swiveling action
- 3/16" thick steel leg construction
- 5/8" dia. permanent rivet kingpin
- RoHS compliant industrial zinc finish for corrosion resistance
- 1/2" hollow axle with grease zerk and lock nut

APPLICATIONS

- Dollies
- Waste Disposal Trucks
- Warehouse Trucks
- Floor Trucks
- Platform Trucks
- Material Handling Carts
- Factory Applications
- Bakery Carts
- Assembly Line Dollies
- Stock Carts
- Tool Boxes and much more!

Top Plate Dimensions



RIG MODELS










Wheel Dia.	Tread Width	*Load Capacity (lbs)	Mount Height	Swivel Radius	Rig Part #
4"	2"	900	5-5/8"	5-7/16"	RIG4X2EST
5"	2"	900	6-1/2"	5-13/16"	RIG5X2EST
6"	2"	900	7-1/2"	6"	RIG6X2EST
8"	2"	900	9-1/2"	6-3/8"	RIG8X2EST

*Some wheels have lower capacities. See pemccasters.com/eline for specifications.

CASTER MODELS

Wheel Dia.	Tread Width	Mount Height	Swivel Radius	Caster Part #
4"	2"	5-5/8"	5-7/16"	ET4X2__
5"	2"	6-1/2"	5-13/16"	ET5X2__
6"	2"	7-1/2"	6"	ET6X2__
8"	2"	9-1/2"	6-3/8"	ET8X2__



MOR ET6X2MOR Moldon Rubber (Roller Bearing) 	TPD ET6X2TPD Thermo-Rubber Donut (Roller Bearing) 	TPR ES6X2TPR Thermo-Rubber Flat (Roller Bearing) 	TUM ET6X2TUM Thermo-Urethane (Roller Bearing) 	POD ET6X2POD Polypropylene HD (Roller Bearing) 	MOP ET6X2MOP Mold-on Poly (Roller Bearing) 
TPU ET6X2TPU Thermo-Urethane (Roller Bearing) 	KTP8 ET6X2PKTP8 PolyKat™ Thermo-Urethane (Precision Ball) 	PHN ET6X2PHN Phenolic (Roller Bearing) 	CIR ET6X2CIR Cast Iron (Roller Bearing) 